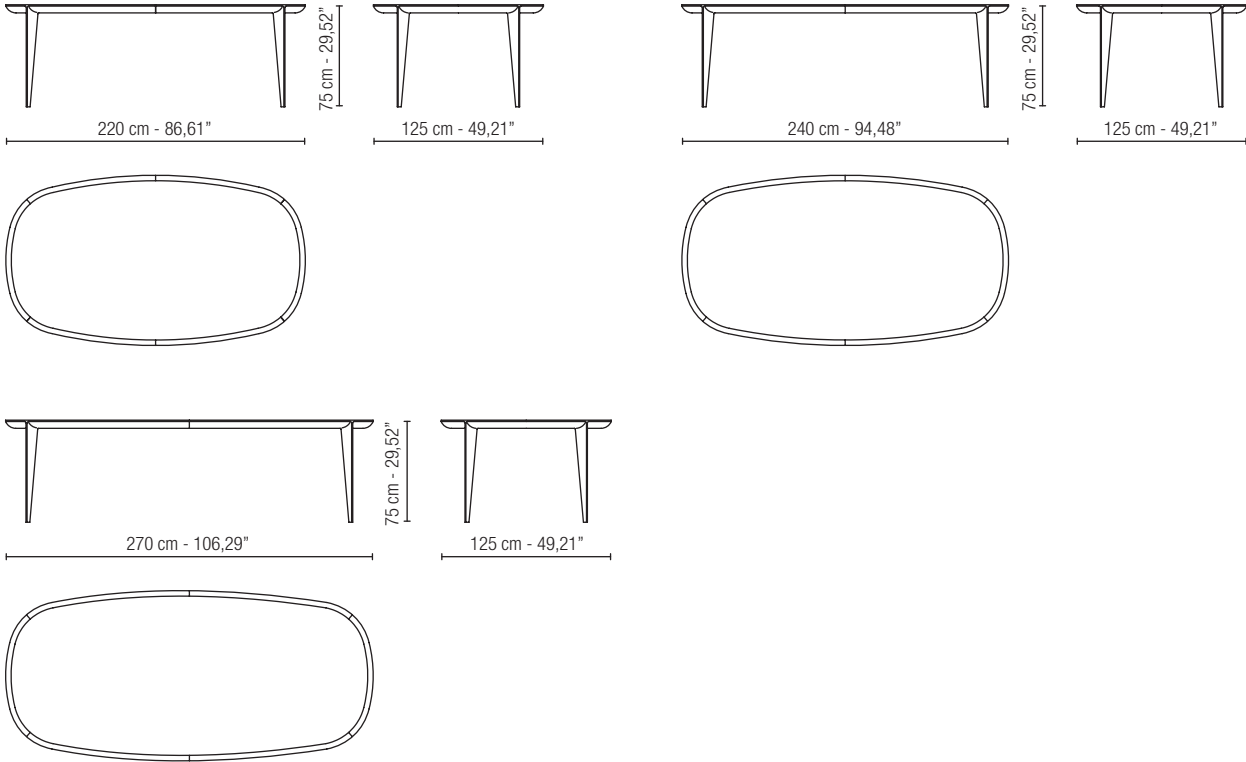




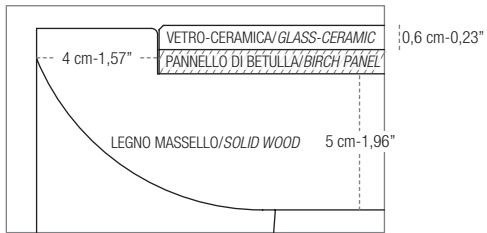
RADICALMENTE ELEGANTE,  
ELEGANTEMENTE ICONICA.  
CON LA COLLEZIONE COMO, MILANO 1964  
PROCLAMA IL SUO MANIFESTO DI AUDACE  
RICERCA ARTISTICA. FORME DECISE  
E LINEARI CHE ACCOMPAGNANO LO SGUARDO  
LUNGO OGNI SUPERFICIE. COLORI RICCHI,  
CON SFUMATURE INEDITE. OGNI DETTAGLIO  
DELLA COLLEZIONE COMO RICHIAMA  
LA STORIA DI UNA CITTÀ IMPEGNATA  
IN UN'INDAGINE ESTETICA CONTINUA.  
DAL DESIGN CHE NASCE DALLA SINTESI  
CONTINUA TRA UN PASSATO  
INTRAMONTABILE E UN FUTURO IDEALE,  
LA COLLEZIONE ESULA IL SOLO MONDO  
DELL'ARREDO E SI FA PORTATRICE DI VALORI,  
MESSAGGI E LINGUAGGI SENZA TEMPO.

RADICALLY ELEGANT,  
ELEGANTLY ICONIC.  
WITH THE COMO COLLECTION,  
MILAN 1964 PROCLAIMS ITS MANIFESTO  
OF DARING ARTISTIC RESEARCH.  
LINEAR AND DECISIVE FORMS THAT  
ACCOMPANY THE GAZE ALONG EVERY SURFACE.  
RICH COLORS, WITH NEW SHADES. EVERY  
DETAIL OF THE COMO COLLECTION RECALLS  
THE HISTORY OF A BUSY CITY IN A CONTINUOUS  
AESTHETIC INVESTIGATION. FROM THE DESIGN  
THAT COMES FROM THE CONTINUOUS SYNTHESIS  
BETWEEN A PAST TIMELESS AND AN IDEAL FUTURE,  
THE COLLECTION GOES BEYOND THE  
WORLD OF FURNITURE ALONE  
AND BECOMES THE BEARER OF TIMELESS  
VALUES, MESSAGES AND LANGUAGES.

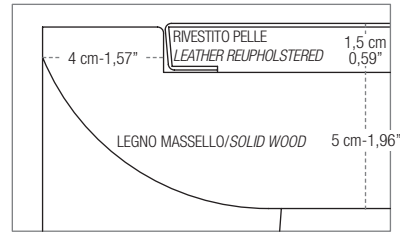
**TAVOLO RETTANGOLARE A BOTTE / CURVED LENGHT RECTANGULAR**



**SEZIONE PIANO VETRO-CERAMICA  
GLASS-CERAMIC TOP SECTION CUT**

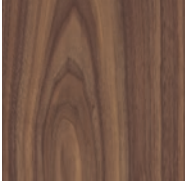


**SEZIONE PIANO PELLE  
LEATHER TOP SECTION CUT**



**STRUTTURA LEGNO MASSELLO/SOLID WOOD STRUCTURE**

LEGNO  
WOOD



KN - Noce Canaletto  
KN - Canaletto Walnut

**BORDO PERIMETRALE DEL PIANO/WOOD FRAME TOP**

LEGNO  
WOOD



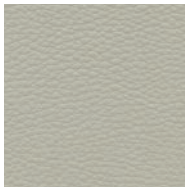
KN - Noce Canaletto  
KN - Canaletto Walnut

**PIANO/TOP**

PELLE  
LEATHER



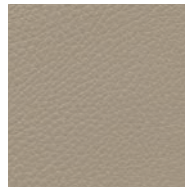
P1-Perfor-MAX 201



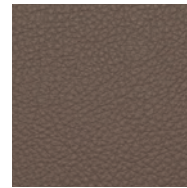
P1-Perfor-MAX 204



P1-Perfor-MAX 205



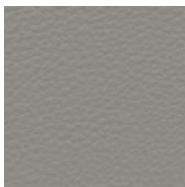
P1-Perfor-MAX 207



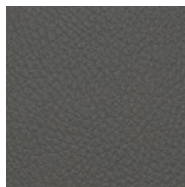
P1-Perfor-MAX 208



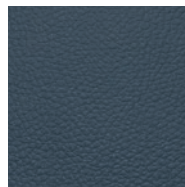
P1-Perfor-MAX 209



P1-Perfor-MAX 216



P1-Perfor-MAX 217

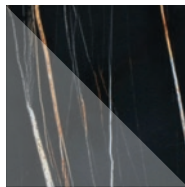


P1-Perfor-MAX 218

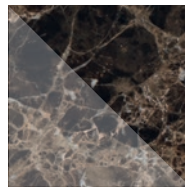
CERAMICA LUCIDA  
GLOSSY CERAMIC



CE1 - Ceramica Calacatta Oro-Lucido  
CE1 - Calacatta Oro Ceramic-Glossy

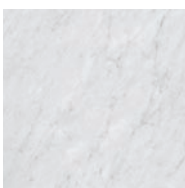


CE2 - Ceramica Sahara Noir-Lucido  
CE2 - Sahara Noir Ceramic-Glossy



CE3 - Ceramica Emperador Dark-Lucido  
CE3 - Emperador Dark Ceramic-Glossy

NEOLITH OPACO MATERICO  
MATT NEOLITH MATERIAL



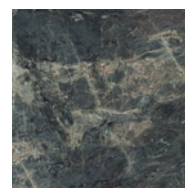
NH1 - Neolith Bianco Carrara-Opaco  
NH1 - White Carrara Neolith-Matt



NH2 - Neolith Mont Blanc-Opaco  
NH2 - Mont Blanc Neolith-Matt



NH3 - Neolith Strata Argentum-Opaco  
NH3 - Strata Argentum Neolith-Matt



NH4 - Neolith Amazonico-Opaco  
NH4 - Amazonico Neolith-Matt



NH5 - Neolith Layla-Opaco  
NH5 - Layla Neolith-Matt

PIANO/TOP

VETRI RETRO VERNICIATI FINITURA SATINATA  
BACK LACQUERED GLASS - SATIN FINISH



VT02 - Laccato NCS S 2005-Y50R  
VT02 - Lacquered NCS S 2005-Y50R



VT03 - Laccato NCS S 2500-N  
VT03 - Lacquered NCS S 2500-N



VT04 - Laccato NCS S 4500-N  
VT04 - Lacquered NCS S 4500-N



VT05 - Laccato NCS S 5005-Y20R  
VT05 - Lacquered NCS S 5005-Y20R



VT06 - Laccato NCS S 6502-G  
VT06 - Lacquered NCS S 6502-G



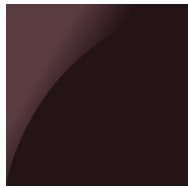
VT09 - Laccato NCS S 2570-R  
VT09 - Lacquered NCS S 2570-R



VT08 - Laccato NCS S 8005-Y20R  
VT08 - Lacquered NCS S 8005-Y20R



VT07 - Laccato NCS S 7020-R80B  
VT07 - Lacquered NCS S 7020-R80B



VT01 - Laccato Ral 9004  
VT01 - Lacquered Ral 9004