

VARENNA DESIGN BY ENNIO & CESARE AROSIO

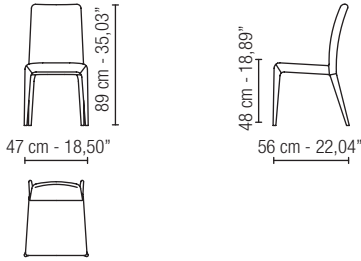


LA FLUIDITÀ DELLA DEFINIZIONE.  
 ISPIRATA ALL'OMONIMO BORGO DEGLI  
 INNAMORATI CHE SORGE SUL LAGO DI COMO,  
 VARENNA È PER MILANO 1964 UNA  
 DICHIARAZIONE D'AMORE AL DESIGN.  
 DA QUESTA PASSIONE NASCE UNA COLLEZIONE  
 DICOTOMICA, CHE UNISCE PUNTI DI VISTA DIVERSI.  
 DA UN LATO IL SORPRENDENTE E SOTTILE  
 INTRECCIO DI TEXTURE. DALL'ALTRO,  
 LA RIPIDA DECISIONE DELLE LINEE,  
 RIFLESSO DELL'AFFACCIARSI A PICCO  
 SUL LAGO DELLA ROMANTICA PASSEGGIATA  
 DEGLI INNAMORATI DI VARENNA.  
 PULIZIA, SIGNORILITÀ, FERMEZZA.  
 UN'ELEGANTE STORIA D'AMORE CHE SI IMPONE  
 CON DELICATEZZA NELLA STANZA, CHE  
 CATTURA LO SGUARDO E RACCONTA  
 LA PROPRIA UNICITÀ.

THE FLUIDITY OF THE DEFINITION.  
 INSPIRED BY THE VILLAGE OF THE SAME NAME  
 THAT RISES ON LAKE COMO,  
 VARENNA IS FOR MILAN 1964 A DECLARATION  
 OF LOVE TO DESIGN. FROM THIS PASSION  
 A DICHOTOMOUS COLLECTION IS BORN,  
 WHICH COMBINES DIFFERENT POINTS OF VIEW.  
 ON THE ONE HAND, THE SURPRISING  
 AND SUBTLE INTERWEAVING OF TEXTURES.  
 ON THE OTHER, THE STEEP DECISION  
 OF THE LINES, REFLECTION OF THE  
 ROMANTIC WALK OF LOVERS IN VARENNA  
 OVERLOOKING THE LAKE.  
 CLEANLINESS, ELEGANCE, FIRMNESS.  
 AN ELEGANT LOVE STORY THAT  
 IT IMPOSES ITSELF WITH DELICACY  
 IN THE ROOM, WHICH CATCHES THE EYE  
 AND TELLS ITS UNIQUENESS.

VARENNA SEDIA/CHAIR

**SEDIA/CHAIR VARENNA**

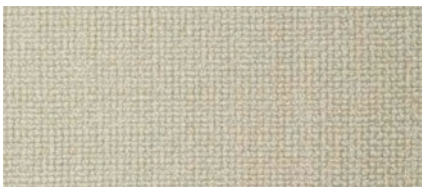


**STRUTTURA/STRUCTURE**

LEGNO MASSELLO DI FAGGIO COMPLETAMENTE RIVESTITO IN PELLE O TESSUTO  
 REUPHOLSTERED BEECH SOLID WOOD STRUCTURE WITH LEATHER OR FABRIC

**RIVESTIMENTO/UPHOLSTERED**

TESSUTO  
 FABRIC



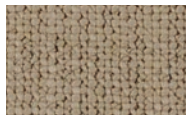
T2-Tundra 28



T2-Tundra 07



T2-Tundra 26



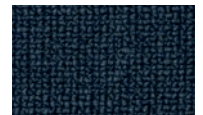
T2-Tundra 02



T2-Tundra 06



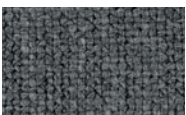
T2-Tundra 27



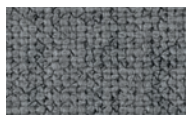
T2-Tundra 21



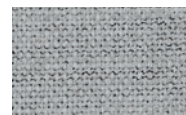
T2-Tundra 01



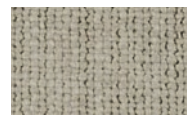
T2-Tundra 11



T2-Tundra 10



T2-Tundra 08



T2-Tundra 03

RIVESTIMENTO/UPHOLSTERED

PELLE  
LEATHER



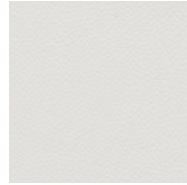
P1-Perfor-MAX 201



P1-Perfor-MAX 204



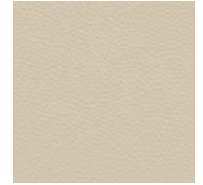
P1-Perfor-MAX 205



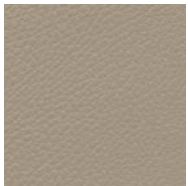
P4-Mare 08



P4-Mare 09



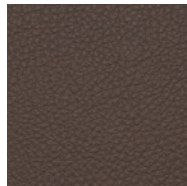
P4-Mare 19



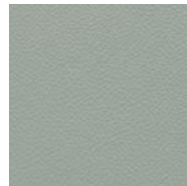
P1-Perfor-MAX 207



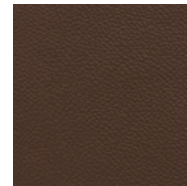
P1-Perfor-MAX 208



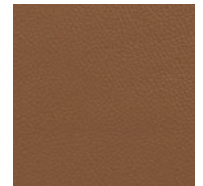
P1-Perfor-MAX 209



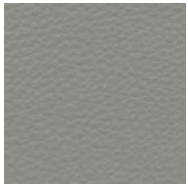
P4-Mare 16



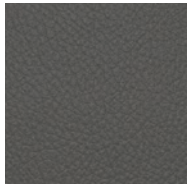
P4-Mare 24



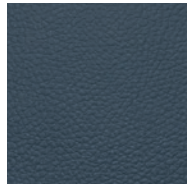
P4-Mare 12



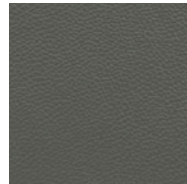
P1-Perfor-MAX 216



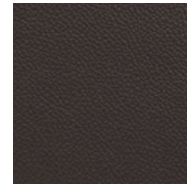
P1-Perfor-MAX 217



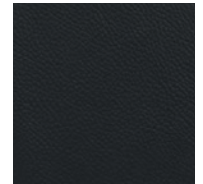
P1-Perfor-MAX 218



P4-Mare 04



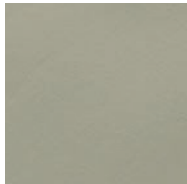
P4-Mare 25



P4-Mare 14



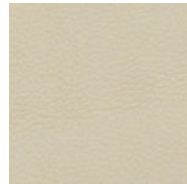
P2-Galileo 21



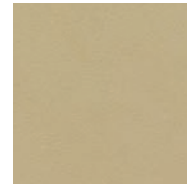
P2-Galileo 51



P2-Galileo 06



P3-Nabuk 04



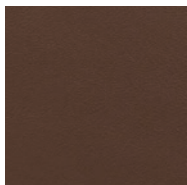
P3-Nabuk 03



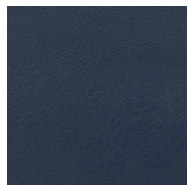
P3-Nabuk 15



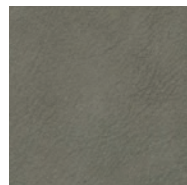
P2-Galileo 15



P2-Galileo 16



P2-Galileo 31



P3-Nabuk 17



P3-Nabuk 16



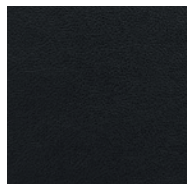
P3-Nabuk 23



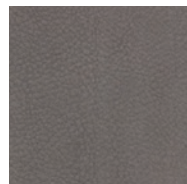
P2-Galileo 27



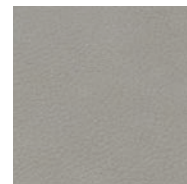
P2-Galileo 20



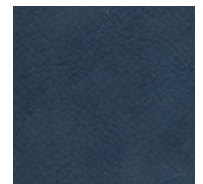
P2-Galileo 32



P3-Nabuk 14



P3-Nabuk 42



P3-Nabuk 18